

Encore FR Pro Color



Light Efficiency:



Light Quality:



Color Temperature:



Output: 4860 lm

Peak: 113472 cd

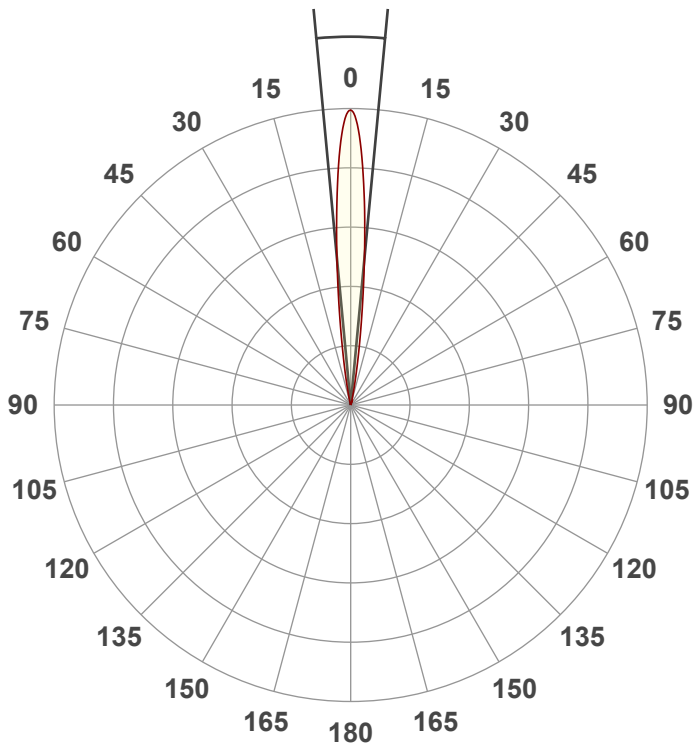
Power: 387 W

PF: 1.0



Beam Angle

10.7°



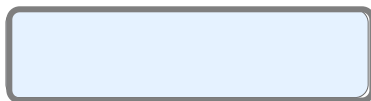
Test:

Zoom 50% Full On

Date:

11/12/2021

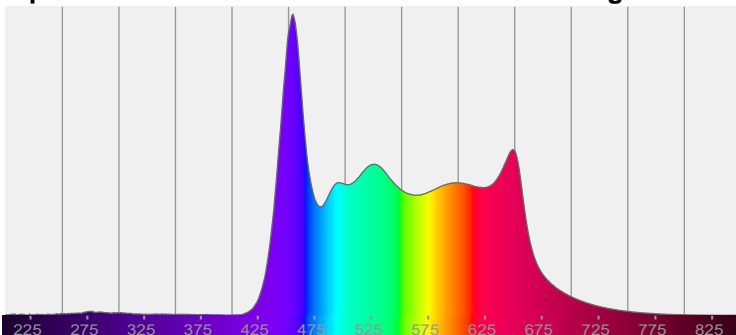
Note:



CIE 1931
x: 0.318
y: 0.317

Spectra

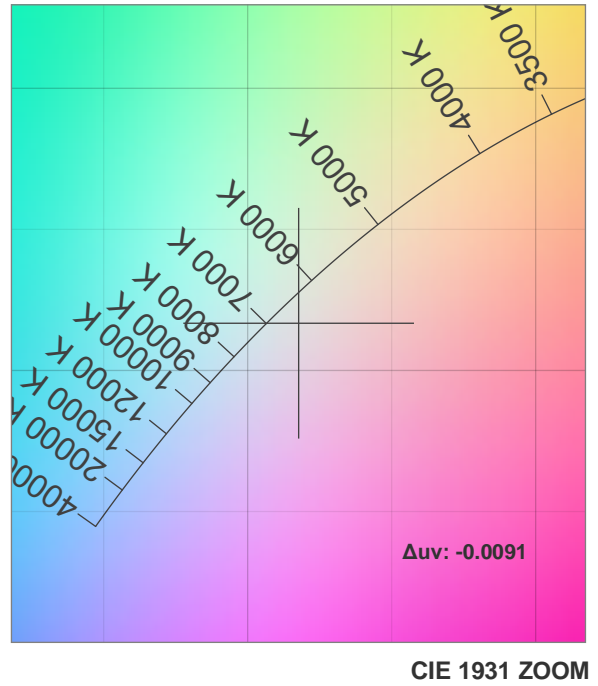
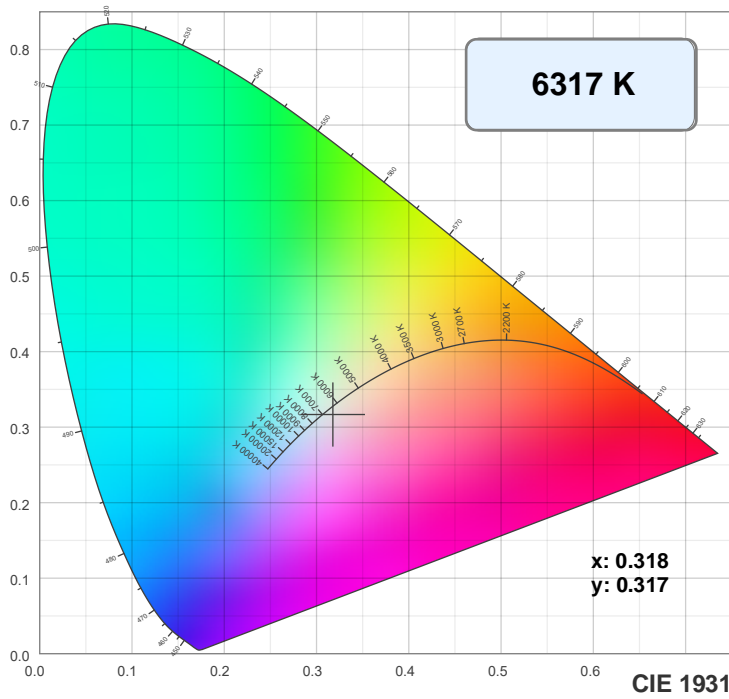
Dominant Wavelength: 360nm



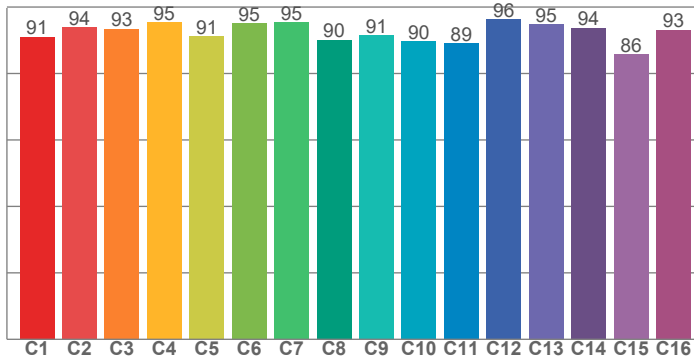
Power

Voltage: 116 V
Current: 3.33 A
Frequency: 0 Hz

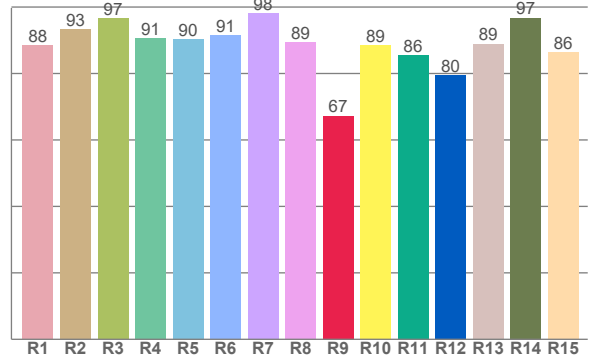
Color Details



TM30: 92.2



CRI: 92.3 (R1-R8)



CRI R values, only R1-R8 are used to calculate final CRI value

R1	R2	R3	R4	R5	R6	R7	R8	R9	R10	R11	R12	R13	R14	R15
88.4	93.4	96.5	90.6	90.3	91.4	98.1	89.4	67.2	88.6	85.5	79.5	88.9	96.8	86.3

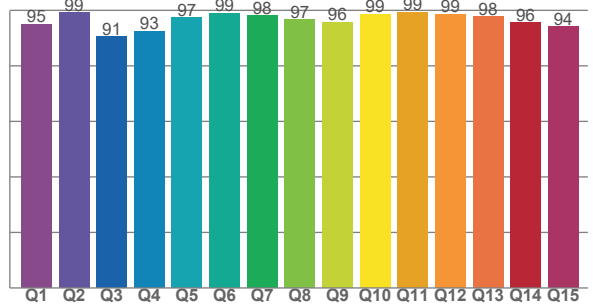
TM30 C values, 16 binned values out of total of 99 C values

C1	C2	C3	C4	C5	C6	C7	C8	C9	C10	C11	C12	C13	C14	C15	C16
91.0	93.9	93.5	95.3	91.2	95.1	95.3	90.1	91.4	89.6	89.1	96.3	94.8	93.7	85.8	93.1

CQS Q values

Q1	Q2	Q3	Q4	Q5	Q6	Q7	Q8	Q9	Q10	Q11	Q12	Q13	Q14	Q15
95.0	99.2	90.6	92.5	97.4	99.0	98.2	96.7	95.7	98.7	99.3	98.6	97.7	95.6	94.2

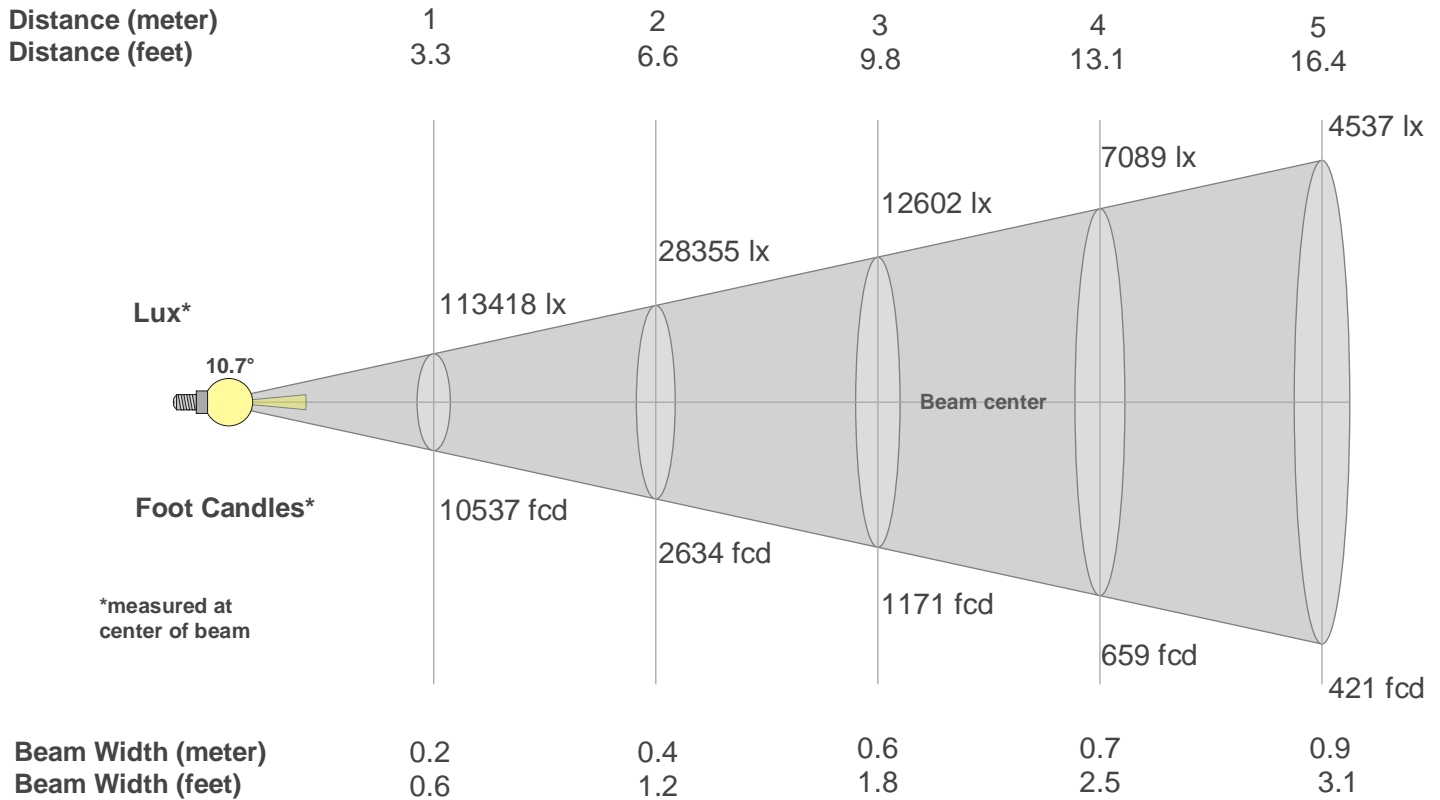
CQS: 95.7



Color Parameters

Color Temperature	Color Rendering Index	Red Component	Color Fidelity	Color Gamut	Color Quality Scale	Color Coordinate CIE 1931	Color Coordinate CIE 1931	Color Coordinate	Color Coordinate	Color Deviation from Black Body
CCT	CRI	CRI R9	TM30 Rf	TM30 Rg	CQS	x	y	u	v	Δuv
6317 K	92.3	67.2	92.2	103.7	95.7	0.318	0.317	0.206	0.308	-0.0091

Beam Details



Beam Intensities from 1-20m

m	1	2	3	4	5	6	7	8	9	10	11	12	13	14	15	16	17	18	19	20
ft	3.3	6.6	9.8	13.1	16.4	19.7	23	26.2	29.5	32.8	36.1	39.4	42.7	45.9	49.2	52.5	55.8	59.1	62.3	65.6
lx	113418	28355	12602	7089	4537	3151	2315	1772	1400	1134	937	788	671	579	504	443	392	350	314	284
fcd	10536.9	2634.2	1170.8	658.6	421.5	292.7	215	164.6	130.1	105.4	87.1	73.2	62.3	53.8	46.8	41.2	36.5	32.5	29.2	26.3

Intensities in 0° C-plane

0°	1°	2°	3°	4°	5°	6°	7°	8°	9°	10°	11°	12°	13°	14°	15°	16°	17°	18°	19°
113K	111K	103K	91K	77K	62K	48K	35K	24K	17K	11K	7K	4K	3K	2K	1K	1K	1K	1K	0K
100%	98%	91%	80%	67%	55%	42%	31%	22%	15%	10%	6%	4%	2%	2%	1%	1%	1%	0%	0%

Intensities in 90° C-plane

0°	1°	2°	3°	4°	5°	6°	7°	8°	9°	10°	11°	12°	13°	14°	15°	16°	17°	18°	19°
113K	111K	103K	91K	77K	62K	48K	35K	24K	17K	11K	7K	4K	3K	2K	1K	1K	1K	1K	0K
100%	98%	91%	80%	67%	55%	42%	31%	22%	15%	10%	6%	4%	2%	2%	1%	1%	1%	0%	0%

Intensities in 180° C-plane

0°	1°	2°	3°	4°	5°	6°	7°	8°	9°	10°	11°	12°	13°	14°	15°	16°	17°	18°	19°
113K	110K	102K	90K	76K	62K	48K	36K	26K	18K	12K	8K	5K	3K	2K	2K	1K	1K	1K	1K
100%	97%	90%	79%	67%	54%	42%	31%	23%	16%	10%	7%	4%	3%	2%	1%	1%	1%	1%	1%

Intensities in 270° C-plane

0°	1°	2°	3°	4°	5°	6°	7°	8°	9°	10°	11°	12°	13°	14°	15°	16°	17°	18°	19°
113K	110K	102K	90K	76K	62K	48K	36K	26K	18K	12K	8K	5K	3K	2K	2K	1K	1K	1K	1K
100%	97%	90%	79%	67%	54%	42%	31%	23%	16%	10%	7%	4%	3%	2%	1%	1%	1%	1%	1%

Beam Angle 50%	Field Angle 10%	Cutoff Angle 2,5%	Intensity Ratio in 120° Cone	Intensity Ratio in 90° Cone
10.7°	20°	26.1°	100.0%	100.0%